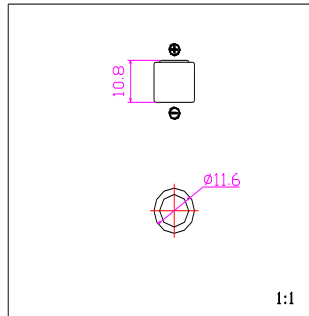
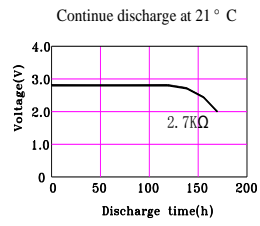


# WaMa Battery Co.,Ltd

## CR-1/3N Lithium Cylindrical Battery (Data Sheet)

### Specification

Nominal Voltage		3.0V
Max. Dimension	Diameter	11.6mm
	Height	10.8mm
	Apx. Weight	3.3g
Standard discharge		1mA
Standard discharge capacity		160mAh
Max. discharge current	Continue	5mA
	Pulse	80mA
Temperature Range (°C)		-30~60



### Precaution:

1. Don't charge the battery.
2. Don't solder on the battery.
3. Don't mix the fresh with used one.
4. Don't short circuit.
5. Storage this battery in a cool, dry place.
6. Keep away from children.