



WAMA ELECTRONICS TECH CO.,LTD

Chemical System : Coin Type Manganese Dioxide Lithium battery

Model No. : CR1616

Nominal Dimensions: $\Phi 16.0 \times 1.6\text{mm}$

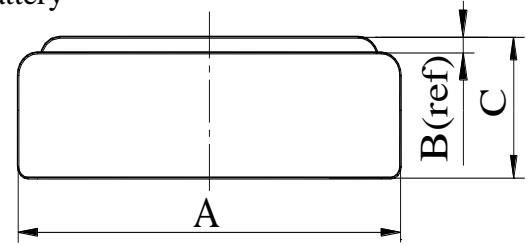
Nominal Voltage : 3.00V

Average Weight : 1.2g

Applications : Watch, calculator, electronic toy, etc.

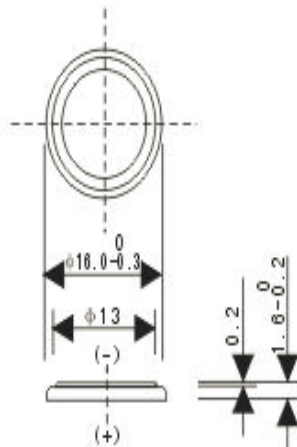
Shelf Life : Not less than 95% of the service capacity, following 1st year storage at 20°C.

Standard Capacity : 45mAh (continuous discharge at 20°C under 0.10mA discharge current to 2.0V voltage)

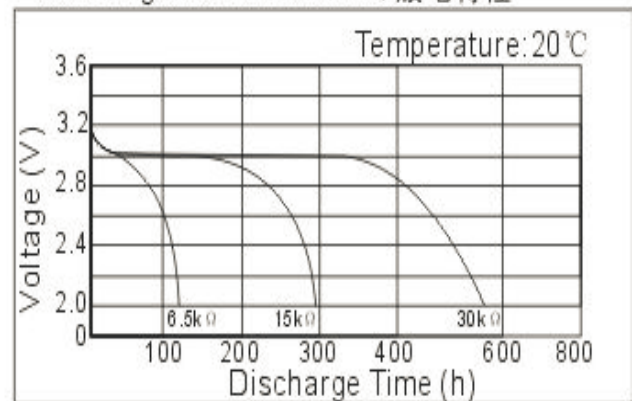


CR1616

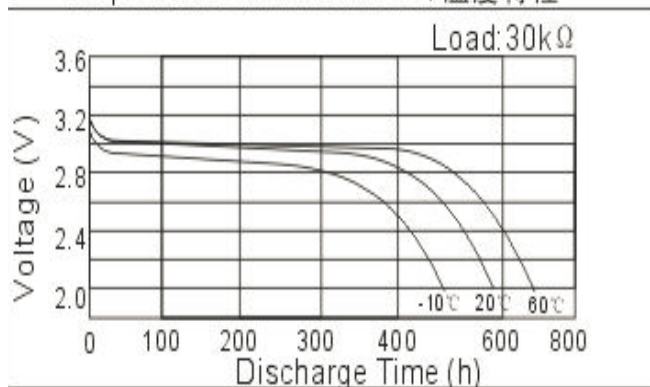
| | |
|--------------------------|--------------|
| 标准电压 Nominal Voltage | 3V |
| 标准容量 Nominal Capacity | 45mAh |
| 负载电阻 Load Resistance | 30k Ω |
| 重量 Weight | 1.2g |



Discharge Characteristics/放电特性



Temperature Characteristics/温度特性



Load-Capacity/负载容量

