



# WAMA ELECTRONICS TECH CO.,LTD

**Chemical System** : Coin Type Manganese Dioxide Lithium battery

**Model No.** : CR1130

**Nominal Dimensions:**  $\Phi 11.0 \times 3.0\text{mm}$

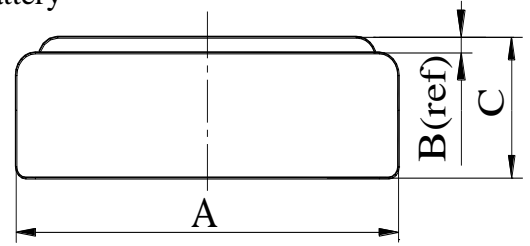
**Nominal Voltage** : 3.00V

**Average Weight** : 1g

**Applications** : Watch, calculator, electronic toy, etc.

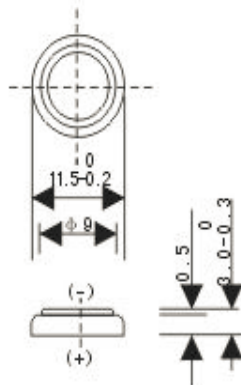
**Shelf Life** : Not less than 95% of the service capacity, following 1st year storage at 20°C.

**Standard Capacity** : 60mAh (continuous discharge at 20°C under 0.10mA discharge current to 2.0V voltage)

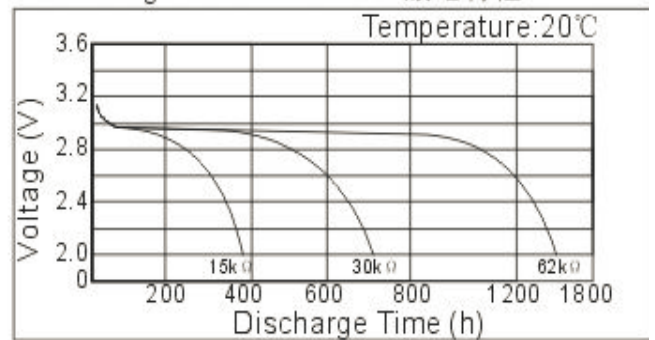


## CR1130

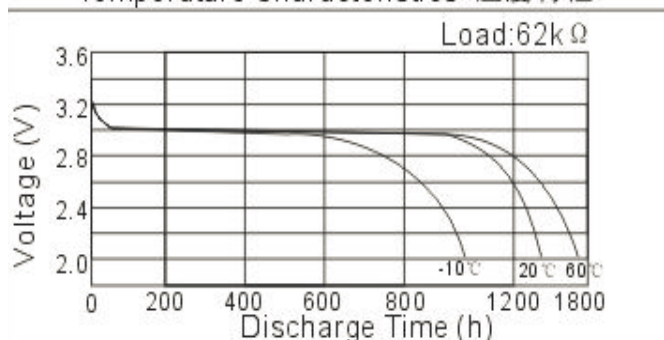
标准电压 Nominal Voltage	3V
标准容量 Nominal Capacity	60mAh
负载电阻 Load Resistance	62K $\Omega$
重量 Weight	1g



Discharge Characteristics/放电特性



Temperature Characteristics/温度特性



Load-Capacity/负载容量

