

ALKALINE MANGANESE BATTERY

**1.Other name for the same type**

L828,27A

**2.Chemical System**

Alkaline Zinc—Manganese battery (+) Zn|KOH|MnO<sub>2</sub>(-)

**3.Nominal Voltage:** 12.00V

**4.Average Weight:** 4.63g

**5.Nominal Capacity:** 21mAh

(continuous discharge at 20±2°C under 0.05mA discharge current to 7.20V voltage)

**6.Appearance:** Metal Can

**7.Electrical Characteristics:**

7.1 Off—load Voltage:

New Battery≥12.10V

After 12 Months (Room Temp.)≥12.00V

7.2 Discharge Time(continuous discharge at 20±2°C under 20KΩ discharge load to 7.2V voltage)

New Battery≥35hours

After 12 Months (Room Temp.)≥31 hours

7.3 Over—discharge Characteristic

Condition: 20KΩcontinuous discharge at 20±2°C & 65±20%R.H.

Period: 48hours

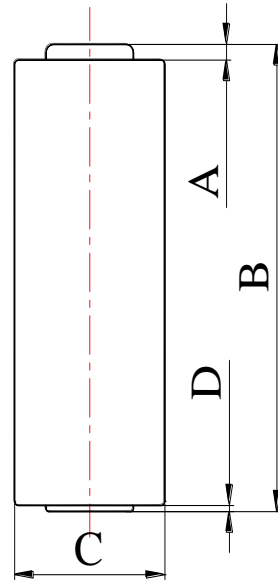
Characteristic: No deformation is over 0.20mm of the nominal dimension, and no visual electrolyte leakage

## 8. Dimensions:

Nominal Dimension:  $\varnothing 8.00 \times 28.80$

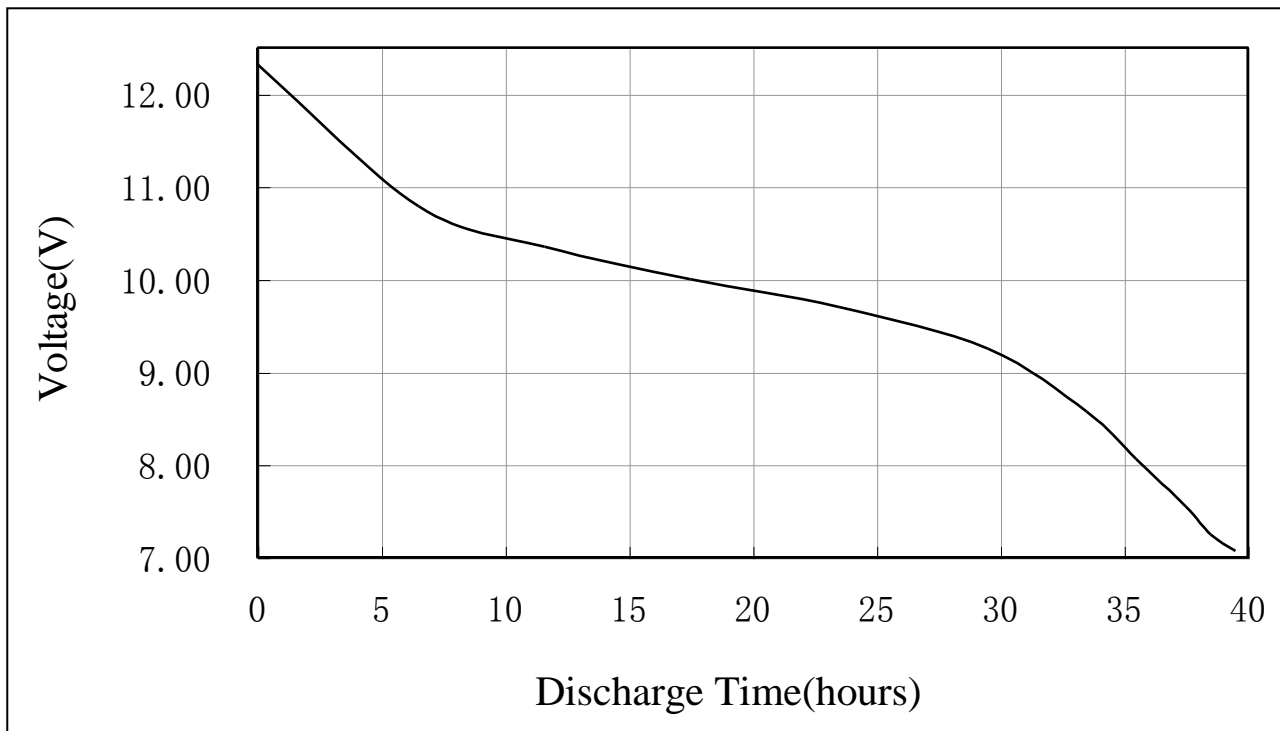
(Unit: mm)

Dimension	Range
A(ref.)	0.60
B	$28.00 \pm 0.30$
C	$7.75 \pm 0.10$
D(ref.)	0.10



## 9. Typical Discharge Characteristics

(continuous discharge at  $20 \pm 2^\circ\text{C}$  under  $20\text{K}\Omega$  discharge load to  $7.20\text{V}$  voltage)



## **10. Mark:**

The following message will be printed or stamped on the body of the battery:

10.1 Designation: 27A、 L828.

10.2 Manufacturer's name: WAMA ELECTRONICS TECHNOLOGY CO.,LTD

10.3 Trademark: no

10.4 Nominal Voltage: 12V.

10.5: Pole: “+” and “-”.

10.6 Warning: May explode or leak if charged or disposed of in fire.

## **11. Caution for use :**

11.1 There are risks of electrolyte leakage or causing damage to the device if the battery is charged;

11.2 The battery shall be installed with “+”and “-” in correct position;

11.3 Short-circuiting and heating the battery、 disposing of the can must not be permitted.

---